





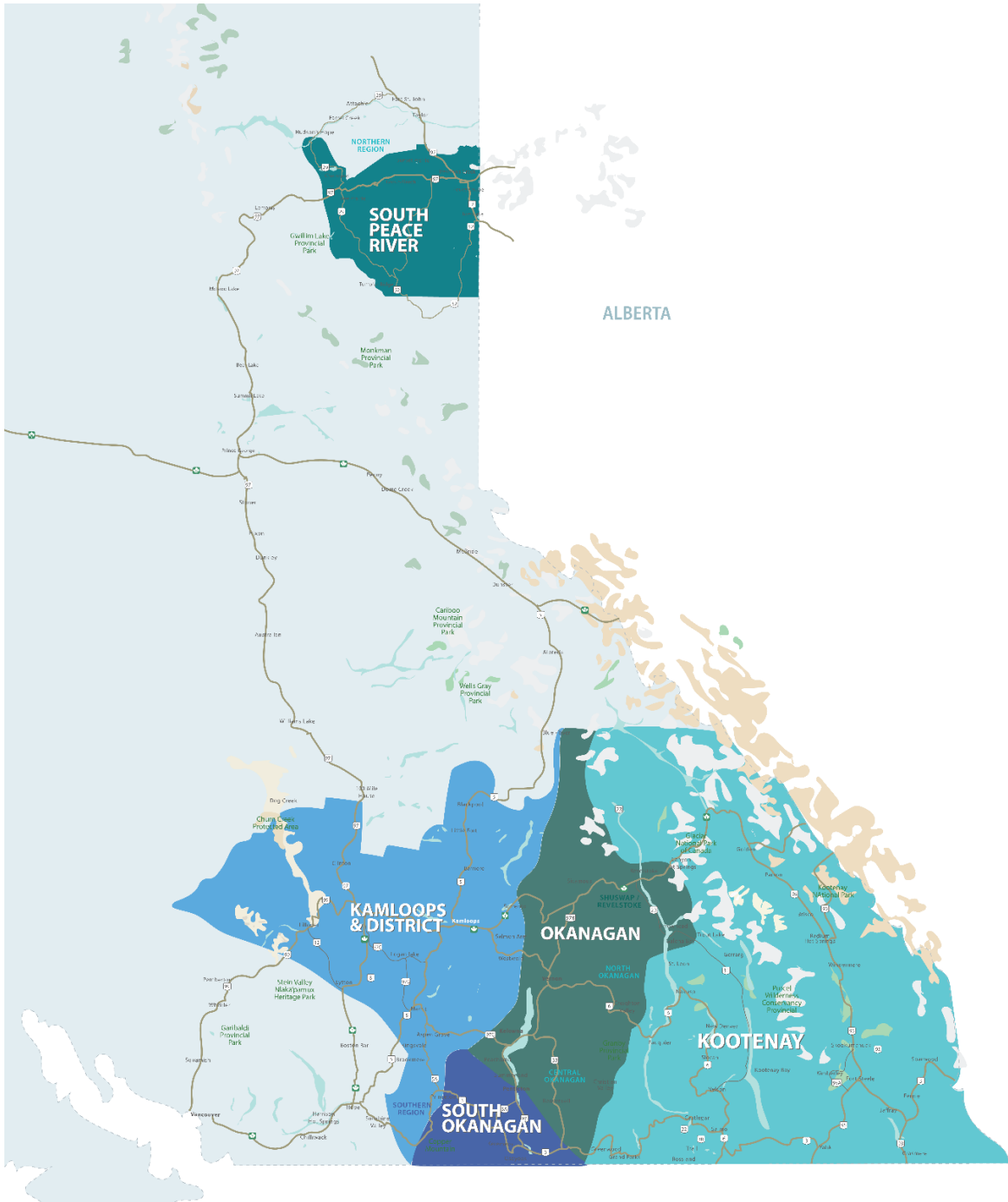


**RESIDENTIAL SALES\***  
**SEPTEMBER 2024**  
**SUMMARY STATISTICS**

	 Units Sold	 Dollar Volume (Millions)	 Active Listings	 New Listings
<b>CENTRAL OKANAGAN</b>	263 ↑0.4%	\$202.1 ↓-3.4%	3,281 ↑33.8%	879 ↓-8.9%
<b>NORTH OKANAGAN</b>	105 ↑7.1%	\$81.5 ↑18.6%	1,005 ↑16.5%	212 ↓-21.2%
<b>SHUSWAP / REVELSTOKE</b>	78 ↑20.0%	\$48.8 ↑15.8%	761 ↑41.2%	120 ↓-14.9%
<b>SOUTH OKANAGAN</b>	114 0.0%	\$66.5 ↓-12.0%	1,521 ↑32.3%	317 ↓-0.3%
<b>SOUTH PEACE RIVER AREA</b>	46 ↓-4.2%	\$17.3 ↑13.2%	259 ↓-6.8%	59 ↓-1.7%
<b>KAMLOOPS AND DISTRICT</b>	177 ↓-9.7%	\$106.1 ↓-8.1%	1,386 ↑24.5%	416 ↓-4.4%
<b>KOOTENAY</b>	242 ↑1.3%	\$138.1 ↑11.5%	1,759 ↑21.4%	367 ↑4.3%
<b>TOTAL ASSOCIATION</b>	1,025 ↑0.3%	\$660.4 ↑1.6%	9,972 ↑27.1%	2,370 ↓-6.7%

\*Residential = Acreage, Duplex, Mobile Home, Recreational, Single Family, 3/4Plex, Apartment & Townhouse. Excludes Land

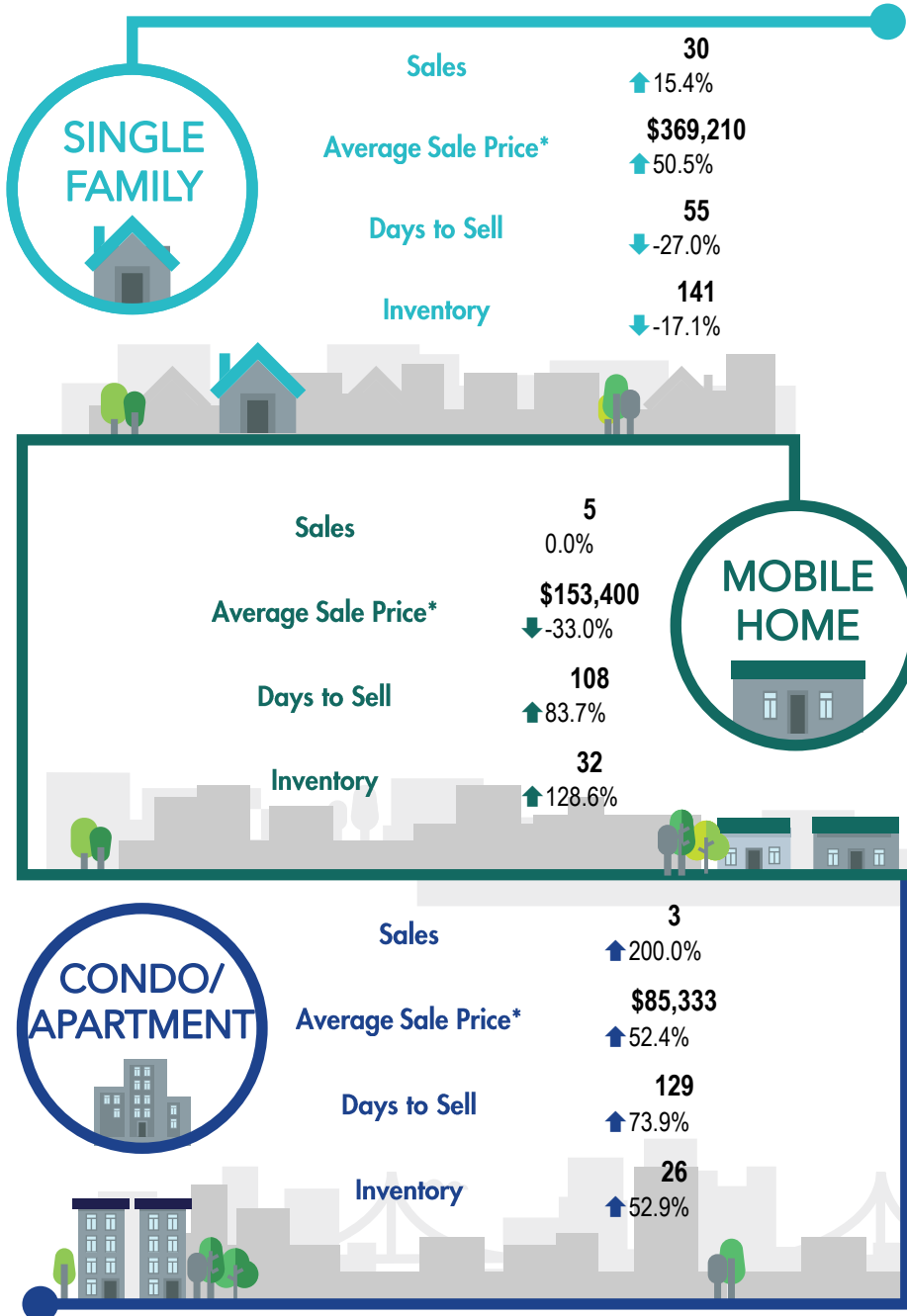
\*\*Percentage indicates change from the same period last year



This map is for informational purposes. It does not represent an on-the-ground survey and represents only the approximate relative location of property boundaries.



**SOUTH PEACE RIVER REGION**



\*The Association of Interior REALTORS® cautions that the average residential price is a useful figure only for establishing trends and comparisons over a period of time. It does not indicate an actual price for a home due to the wide selection of housing available over the vast geographic area.

\*\*Percentage indicate change from the same period last year