





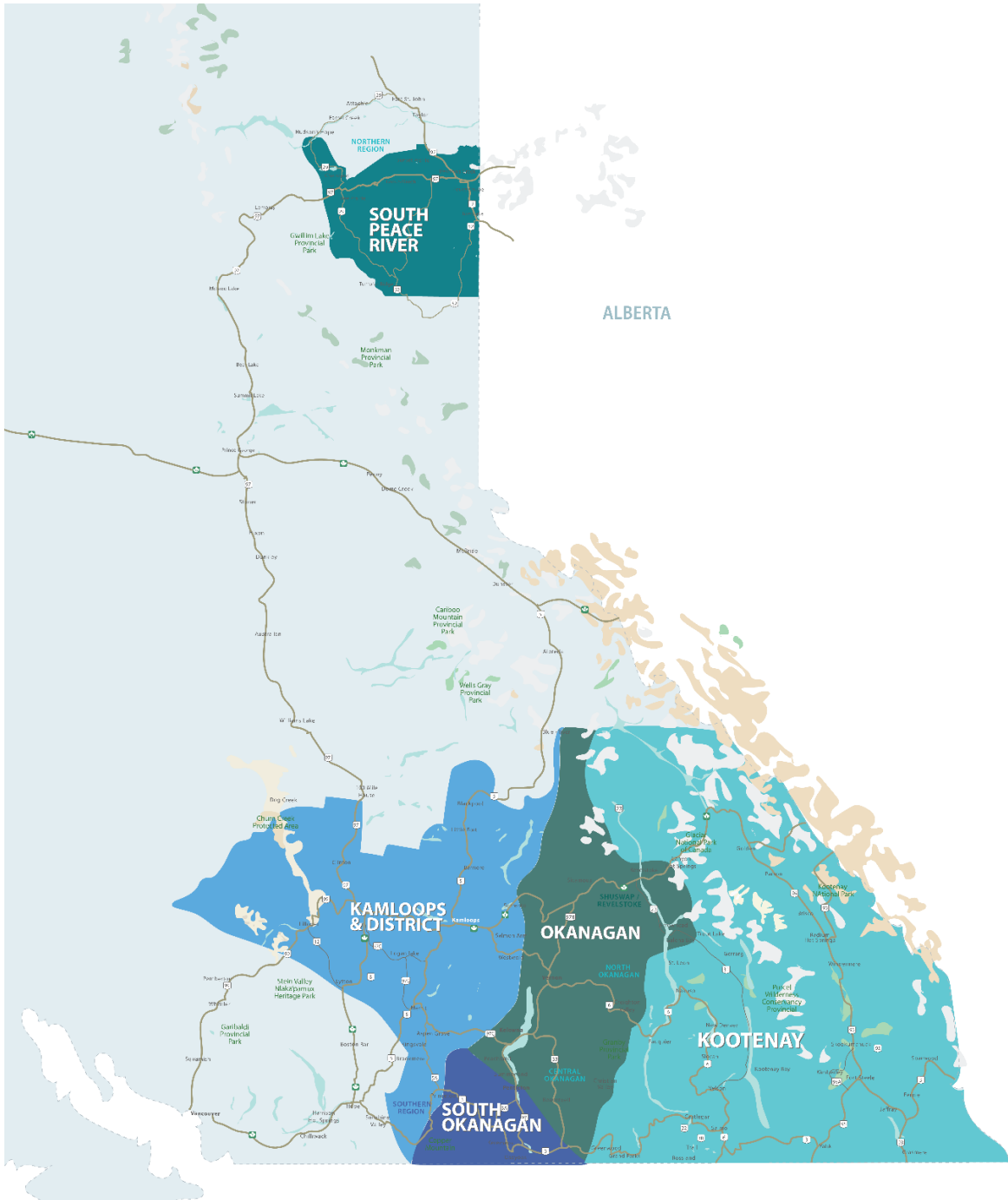


**RESIDENTIAL SALES\***  
**MAY 2024**  
**SUMMARY STATISTICS**

	 Units Sold	 Dollar Volume (Millions)	 Active Listings	 New Listings
<b>CENTRAL OKANAGAN</b>	436 ↓-21.2%	\$353.0 ↓-26.8%	3,181 ↑58.0%	1,236 ↑18.8%
<b>NORTH OKANAGAN</b>	183 ↑2.2%	\$133.8 ↑8.4%	1,062 ↑39.9%	397 ↑12.8%
<b>SHUSWAP / REVELSTOKE</b>	116 ↑8.4%	\$83.7 ↑10.2%	737 ↑41.5%	259 ↑6.6%
<b>SOUTH OKANAGAN</b>	191 ↓-2.6%	\$116.0 ↓-7.6%	1,500 ↑57.6%	444 ↑23.3%
<b>SOUTH PEACE RIVER AREA</b>	47 ↑51.6%	\$14.4 ↑55.4%	225 ↓-14.1%	65 ↓-24.4%
<b>KAMLOOPS AND DISTRICT</b>	251 ↓-12.5%	\$153.8 ↓-11.9%	1,363 ↑42.1%	613 ↑28.5%
<b>KOOTENAY</b>	288 ↓-15.5%	\$164.4 ↓-12.0%	1,615 ↑24.7%	604 ↑6.5%
<b>TOTAL ASSOCIATION</b>	1,512 ↓-10.7%	\$1,019.0 ↓-13.5%	9,683 ↑43.2%	3,618 ↑15.8%

\*Residential = Acreage, Duplex, Mobile Home, Recreational, Single Family, 3/4Plex, Apartment & Townhouse. Excludes Land

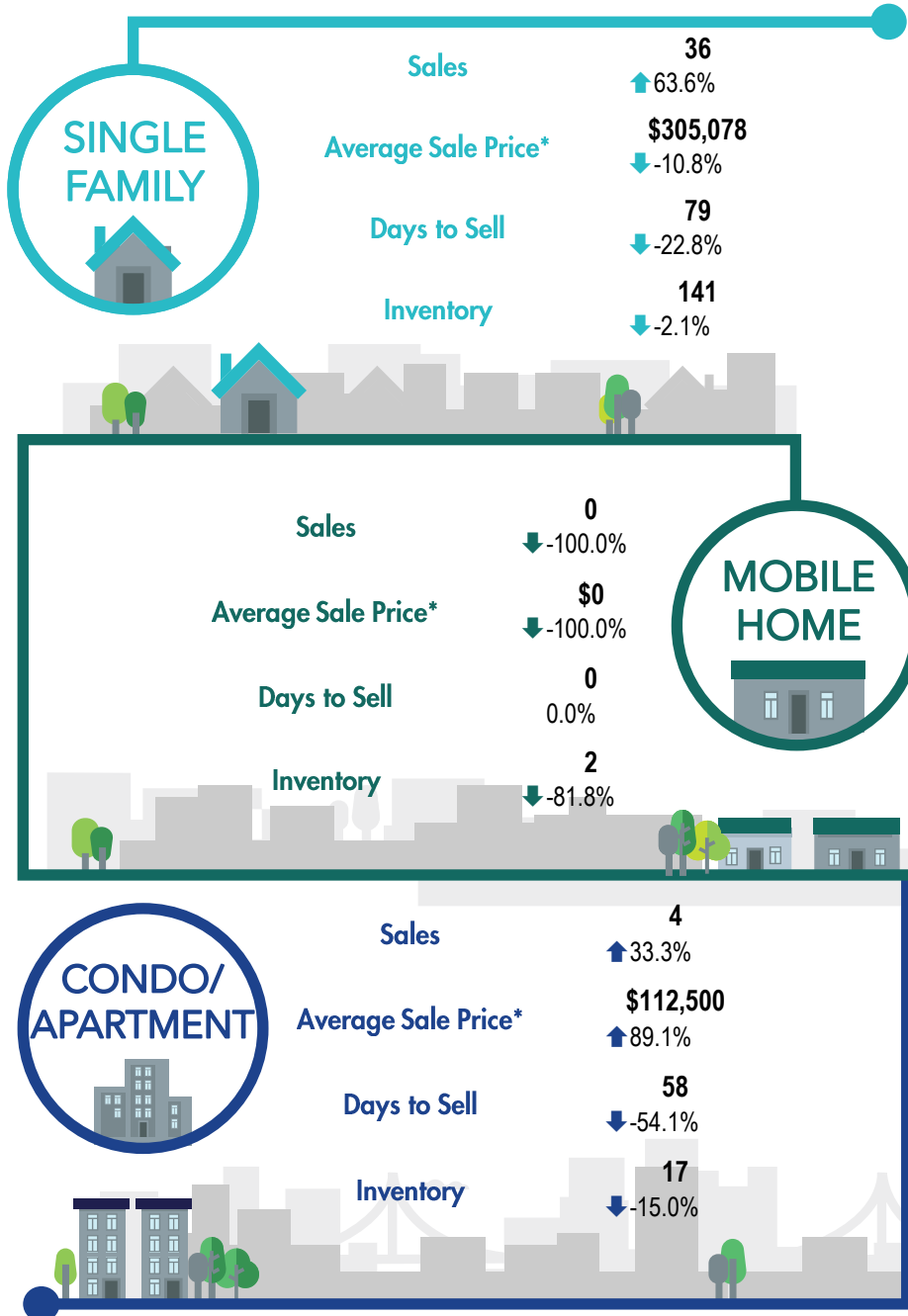
\*\*Percentage indicates change from the same period last year



This map is for informational purposes. It does not represent an on-the-ground survey and represents only the approximate relative location of property boundaries.



**SOUTH PEACE RIVER REGION**



\*The Association of Interior REALTORS® cautions that the average residential price is a useful figure only for establishing trends and comparisons over a period of time. It does not indicate an actual price for a home due to the wide selection of housing available over the vast geographic area.

\*\*Percentage indicate change from the same period last year