





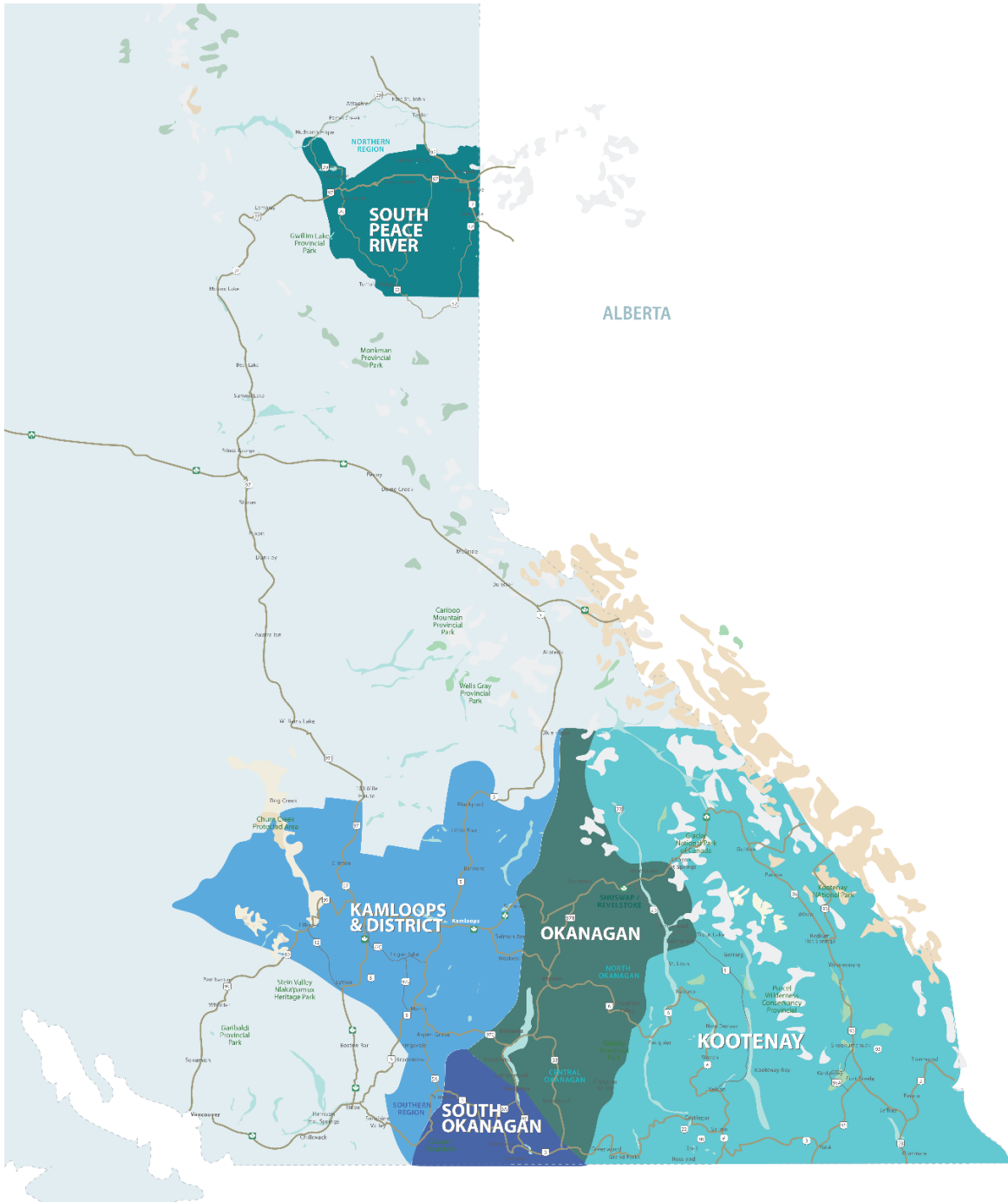


RESIDENTIAL SALES*
JANUARY 2025
SUMMARY STATISTICS

	 Units Sold	 Dollar Volume (Millions)	 Active Listings	 New Listings
CENTRAL OKANAGAN	241 ↑21.1%	\$197.3 ↑25.3%	2,369 ↑24.0%	884 ↑50.9%
NORTH OKANAGAN	82 ↑34.4%	\$54.7 ↑48.9%	659 ↑15.8%	208 ↑27.6%
SHUSWAP / REVELSTOKE	49 ↑6.5%	\$31.0 ↑4.0%	413 ↑22.2%	93 ↑29.2%
SOUTH OKANAGAN	105 ↑75.0%	\$66.9 ↑69.4%	1,057 ↑15.9%	312 ↑50.0%
SOUTH PEACE RIVER AREA	21 ↑5.0%	\$6.0 ↑30.9%	181 ↓-4.7%	49 ↑11.4%
KAMLOOPS AND DISTRICT	140 ↑13.8%	\$76.8 ↑8.6%	953 ↑19.6%	398 ↑28.4%
KOOTENAY	168 ↑35.5%	\$86.7 ↑50.7%	1,182 ↑20.1%	289 ↑16.1%
TOTAL ASSOCIATION	806 ↑27.3%	\$519.5 ↑31.0%	6,814 ↑19.5%	2,233 ↑36.8%

Residential = Acreage, Duplex, Mobile Home, Recreational, SINGLE-FAMILY, 3/4Plex, Apartment & Townhouse. Excludes Land

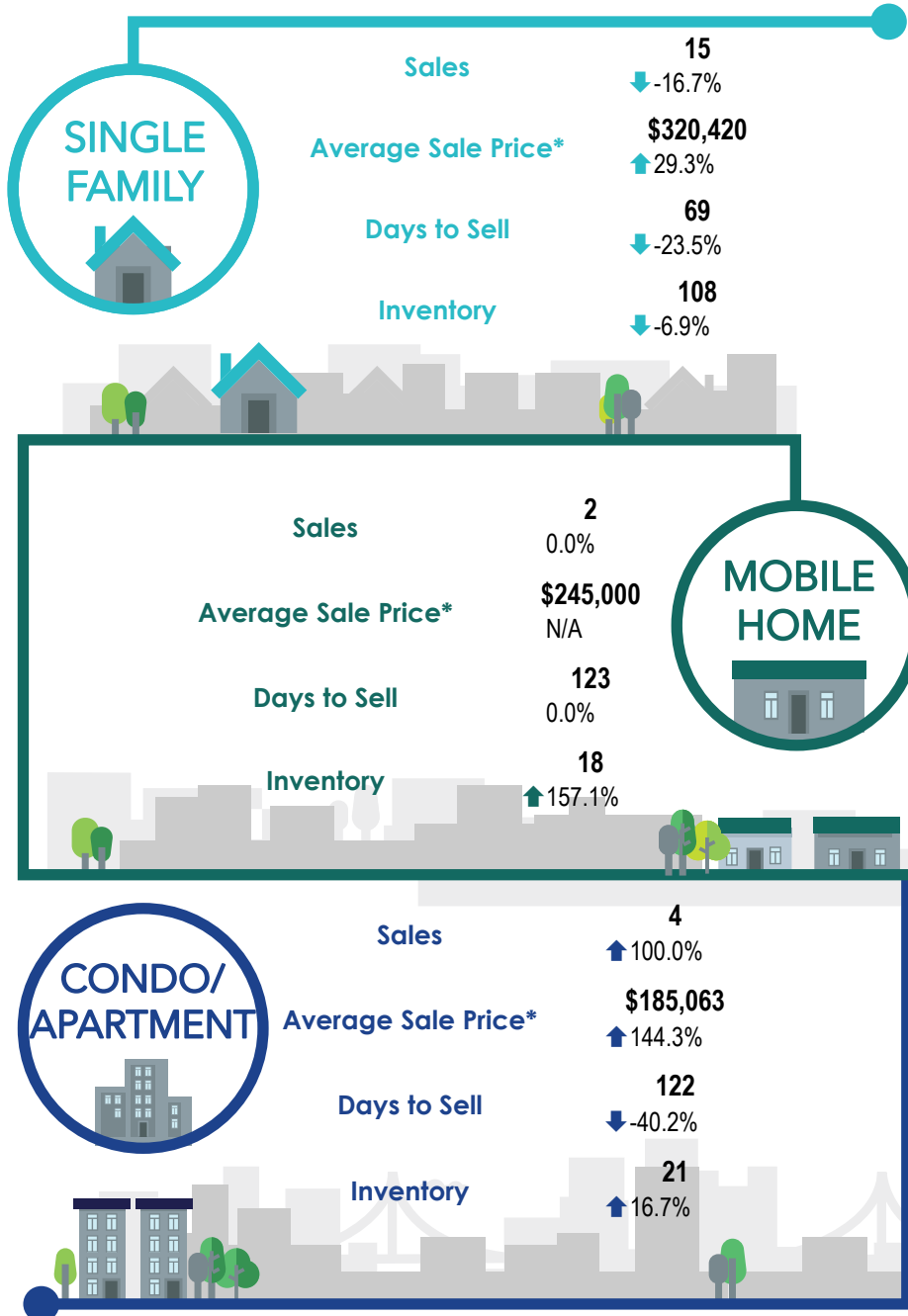
**Percentage indicates change from the same period last year



This map is for informational purposes. It does not represent an on-the-ground survey and represents only the approximate relative location of property boundaries.



SOUTH PEACE RIVER REGION



*The Association of Interior REALTORS® cautions that the average residential price is a useful figure only for establishing trends and comparisons over a period of time. It does not indicate an actual price for a home due to the wide selection of housing available over the vast geographic area.

**Percentages indicate changes from the same period last year.